



NEWSLETTER

VOL. 28- No. 9

CITY OF TUCSON RETIREES ASSOCIATION

NOVEMBER 2011

NEWSLETTER EDITOR: Jean Wilkins

CTRA NEWSLETTER WEBSITE: tucsonaz.gov/retirement2



ANNUAL HOLIDAY LUNCHEON WEDNESDAY, DECEMBER 14, 2011 TANQUE VERDE GUEST RANCH 14301 E. Speedway



\$18.00 per person
GATHER AND NETWORKING – 11:00 A.M.
INVOCATION/PLEDGE OF ALLEGIANCE
AND ANNOUNCEMENTS – 11:30 A.M.
LUNCH SERVED – 11:45 A.M.
ENTERTAINMENT
DOOR PRIZE DRAWING
RESERVATION DEADLINE: DECEMBER 10, 2010

LUNCHEON RESERVATION, TANQUE VERDE GUEST RANCH WEDNESDAY, DECEMBER 14, 2011

LUNCHEON BUFFET - \$18.00 per person (Price includes gratuity and tax). Variety of hot entrees (meats, soups and vegetables), selection of salads, pastry table with Chef's specialty deserts and choice of beverage.

MEMBER _____ GUEST _____

NUMBER _____ X \$18.00 = \$ _____ MAKE CHECK PAYABLE TO CTRA

Mail reservations and check to: **RANDY SCHULER, CTRA TREASURER,**
2620 W. Camino Llano, Tucson, Arizona 85742 (Telephone 297-6938)
RESERVATION DEADLINE: December 10, 2011

DECEMBER ACTIVITIES

EXECUTIVE BOARD MEETING – No Executive Board Meeting in December since the Holiday Luncheon falls on Board's regular meeting date.

DECEMBER HOLIDAY LUNCHEON – December 14, 2011, Tanque Verde Guest Ranch, 14301 E. Speedway.

GOLF ACTIVITY – Golf group meets each Tuesday of the month. Call Kirke Guild at 298-5672 if interested. Kirke will provide information on golf course and tee times.
Dates: December 6, 13, 20 and 27, 2011.

WELCOME NEW MEMBERS

CLAIRE BEAUBIEN (Bill) – retired from TSRS Retirement Office, October 2011.

RIES LINDLEY (Marcia) – retired from Water Department, November 2011.

LEONDR A PRICE – retired from EEO, August 2011.

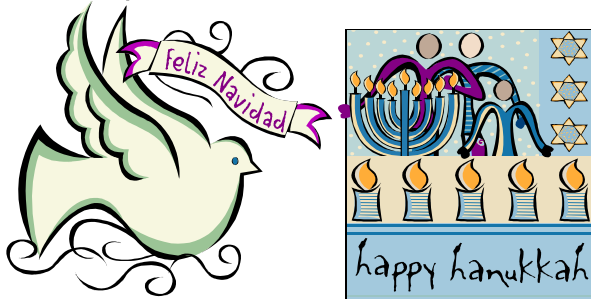
KAREN LaMARTINA – retired from Tucson Water Department, November 2011.

MARK CRUM – retired from General Services, January 2012.

DALE SUTER (Catesby), retired from General Services, August 2011.

HOLIDAY GREETINGS

Merry
Christmas



May the holidays fill your heart with warmth and love. This is the time for loving, giving and sharing.

We send warm wishes for happiness, love and peace always!

PENSION SYSTEM UPDATE

The economy continues to be like a roller coaster and recovery from the economic downturn is a slow process.

On October 28, 2011, the TSRS Board of Trustees received the Actuarial Valuation Report for the City of Tucson Supplemental Retirement System. The summary below provides information in the report:

Valuation period July 1, 2010-June 30, 011.

Market Value of assets at June 30, 2011: \$624,664,880.

Market value of investment return on assets earned 22.88%, while the actuarial value of assets earned 1.85%. The actuary commented TSRS had "posted a great return for the year and that he had seen only one other public system higher for the year."

Funded Ratio: The funded ratio decreased from 71% to 67.3%.

Contribution Rates: The Retirement System is supported by member contributions, City contributions and investment earnings from system assets.

Total contribution rate for the System beginning July 1, 2012, is 34.94%.

The City financed portion of the contribution rate increases from 23.39% to 28.77% of active member payroll.

Active employee contribution will be an average of 6.17%.

Pensions paid June 30, 2011:

Service Pensions	1,994
DROP Pensions	225
Disability Pensions	165
Survivor Pensions	325
Totals	2,709

NOTE: This number is significant because it shows PENSIONS PAID OUT exceed the number of Active Employees paying into the System (2,628).

Annual Pension Payroll: \$61,710,576

Average pension for new retirees in FY10/11: \$46,283

Average pension for all retirees:\$22,780.

ASSETS OF THE TSRS SYSTEM AS OF OCTOBER 31, 2011: \$560.8 Million

ANNUAL THANKSGIVING POTLUCK

The annual Thanksgiving Potluck was a success. A large group shared in the event and celebrated the day with friends, old and new. A vote of appreciation to CTRA Board Members and volunteers for providing an enjoyable afternoon.

Special thanks to AGATHA ANAYA who did a great job arranging for the delicious food catered by Rincon Market; and to KEN BOLLE for his invaluable assistance in planning and executing important functions necessary to make this event as successful as it is each year. Thanks, Ken for all the thoughtful things you do!

Thanks to attendees who brought their favorite side dishes!

CHARITY DONATION

One half of the money collected each year from the 50/50 drawing is designated as a "Charity Fund" and in November the CTRA Executive Board votes to donate it to a worthy charity.

On November 9th the Board voted to donate \$500 to TMM Family Services to provide Thanksgiving Dinner to mothers and children residing in TMM Transitional Housing (The Family Journey Program).

The Family Journey Program is a two year transitional housing program for single women with children. TMM's goal is to help women with children who have been homeless or on the verge of being homeless to gain self-sufficiency. Some of the residents have come from domestic abuse situations or their children may be wards of the State and are looking for a place to reunify with their children. The goal for these women with children is to help them become independent during this two year period.

THE IMPORTANCE OF WALKING

Walking can add minutes to your life. This enables you at 85 years old to spend an additional 5 months in a nursing home at \$4,000 per month.

My grandpa started walking five miles a day when he was 60. Now he's 97 years old and we have no idea where the hell he is.

I like long walks, especially when they are taken by people who annoy me.

I have to walk early in the morning, before my brain figures out what I'm doing...

I joined a health club last year, spent about 250 bucks. Haven't lost a pound. Apparently you have to go there!

Every time I hear the dirty word 'exercise', I wash my mouth out with chocolate.

The advantage of exercising every day is so when you die, they'll say, 'Well, he looks good doesn't he.'

If you are going to try cross-country skiing, start with a small country.

I know I got a lot of exercise the last few years,..... just getting over the hill.

We all get heavier as we get older, because there's a lot more information in our heads. That's my story and I'm sticking to it.

AND Every time I start thinking too much about how I look, I just find a pub with a Happy Hour and by the time I leave, I look just fine.

CTRA ANNUAL DUES

Message to members from Kris Liberty, CTRA Membership Chair

As the CTRA Membership coordinator, I want to remind members that CTRA dues are based on calendar year.

If you became a CTRA member in the last months of 2011, please remember that 2012 dues need to be paid in January, 2012.

To any member who pays their dues by check, one easy way to keep your dues current is to sign up for PAYROLL DEDUCTION. Fifty cents is automatically deducted from your pension check each month. This way your dues are always current.

Signing up for Payroll Deduction is simple. Just submit a CTRA Membership Application (included in each monthly newsletter) with your name and complete the lower section of the form, including your signature, and mail to me. If you have any questions about your membership dues, including payroll deduction, please feel free to contact me. Kris Liberty, 520-883-7883, kris_liberty@msn.com

Any member who has not paid their 2012 dues by April will receive notification that their membership will be placed on Inactive Status.



May your holidays
be happy days
filled with love
and laughter.

And may each day
bring joy your way
in the year
that follows after!

SHORT AND FUNNY

4 Worms in Church and a lesson to be learned!!!!

A minister decided that a visual demonstration would add emphasis to his Sunday sermon.

Four worms were placed into four separate jars. The first worm was put into a container of alcohol. The second worm was put into a container of cigarette smoke. The third into a container of chocolate syrup. The fourth into a container of good clean soil.

At the conclusion of the sermon, the Minister reported the following results:

The first worm in alcohol.... DEAD
The second worm in cigarette smoke..DEAD
Third worm in chocolate syrup DEAD
Fourth worm in good clean soil.... ALIVE

So the Minister asked the congregation,
"What did you learn from this demonstration?"

Maxine was sitting in the back, quickly raised her hand and said, "As long as you drink, smoke and eat chocolate, you won't have worms!"

2012 DUES REMINDER
MEMBERSHIP DUES ARE DUE
JANUARY 1, 2012
DON'T FORGET TO MAIL!



**IF ON PAYROLL DEDUCTION, DEDUCTIONS
WILL AUTOMATICALLY CONTINUE.
LIFETIME MEMBERS DO NOT PAY DUES**

TO ALL CITY OF TUCSON RETIREES
The voice of CTRA is most effective
when it serves as the voice of many
especially when the Association
pursues increased pension benefits.
BECOME A MEMBER TODAY!
CTRA MEMBERSHIP APPLICATION
AND RENEWAL FORM

*DATE _____

*NAME _____

BIRTHDATE _____

*ADDRESS _____

*ZIP _____ TELEPHONE _____

*E-MAIL ADDRESS _____

SPOUSE _____ BIRTHDATE _____

DATE HIRED BY CITY _____

DEPARTMENT _____

DATE RETIRED _____

DEPARTMENT _____

_____ Enclosed is \$6 for Annual Dues
(Make check to CTRA)

(COMPLETE ONLY FOR PAYROLL DEDUCTION)

_____ I authorize deduction of \$.50 per
month from pension check

SIGNATURE _____

(Required for Payroll Deduction)

MAIL TO: KRIS LIBERTY
CTRA Membership
2951 W. Alaska
Tucson, Arizona 85746

* Complete for Renewal