

Recommendation

Create green nodes that provide attractive landscaped areas, with public art and other amenities, to enhance the corridor.

What Are Green Nodes?

Green nodes are places that add visual appeal to the streetscape. These nodes may occur on public or private property where there is room to install additional landscape. They may be located in larger spaces – such as in a vacant lot or a deep setback area – or in a smaller space – such as a planter adjacent to side street parking. Green nodes contribute to the overall beautification of the corridor, but some may also be used for demonstration projects to try out a particular plant species or maintenance technique.



Green nodes serve the following important functions:

- Provide visual relief from large expanses of paving.
- Contribute to the “greening” of the corridor.
- Add interest to the corridor and further encourage pedestrian activity.
- Provide opportunities for more diversity in the corridor landscaping.
- Contribute to the overall vibrancy, safety, and desirability of the area.

What Is in a Green Node?

Street Trees

Street trees provide the common link between the node and the surrounding streetscape.

Node Trees

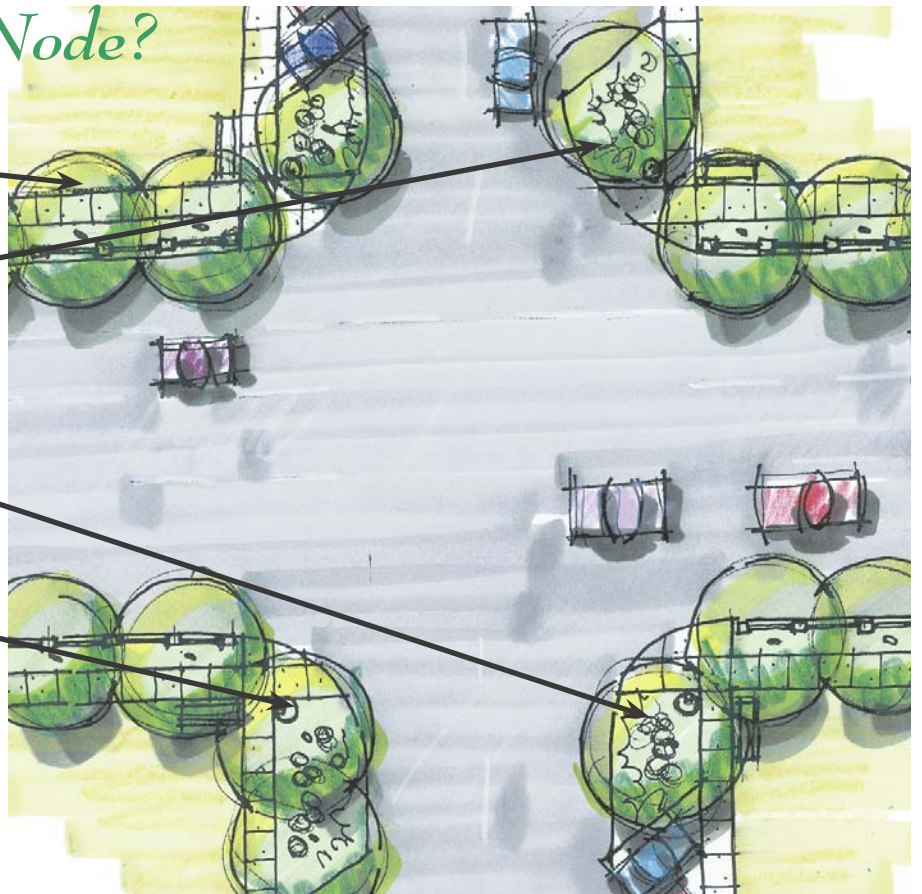
Node trees serve as accent landscaping or to provide special emphasis within the node.

Color/Accent Planting

Specialty color or accent planting allows diversity while contributing to the overall “greening” of the corridor.

Trail Marker or Signage

A green node can provide the setting for specialized elements, such as a marker identifying a particular neighborhood or a historic site. (See Study Card titled “Rolling Stone Trail.”)



Green Nodes

What Are Key Guidelines for Designing Green Nodes?

1 Green nodes should be encouraged at locations where relief from hardscape is needed. These areas include roadway segments where sidewalks abut the curb or where the sidewalks are particularly wide.

2 Green nodes should incorporate shrubs and groundcovers, but do not always have to include trees. Where adjacent street trees provide sufficient shade, green nodes may contain shrubs and groundcovers only.

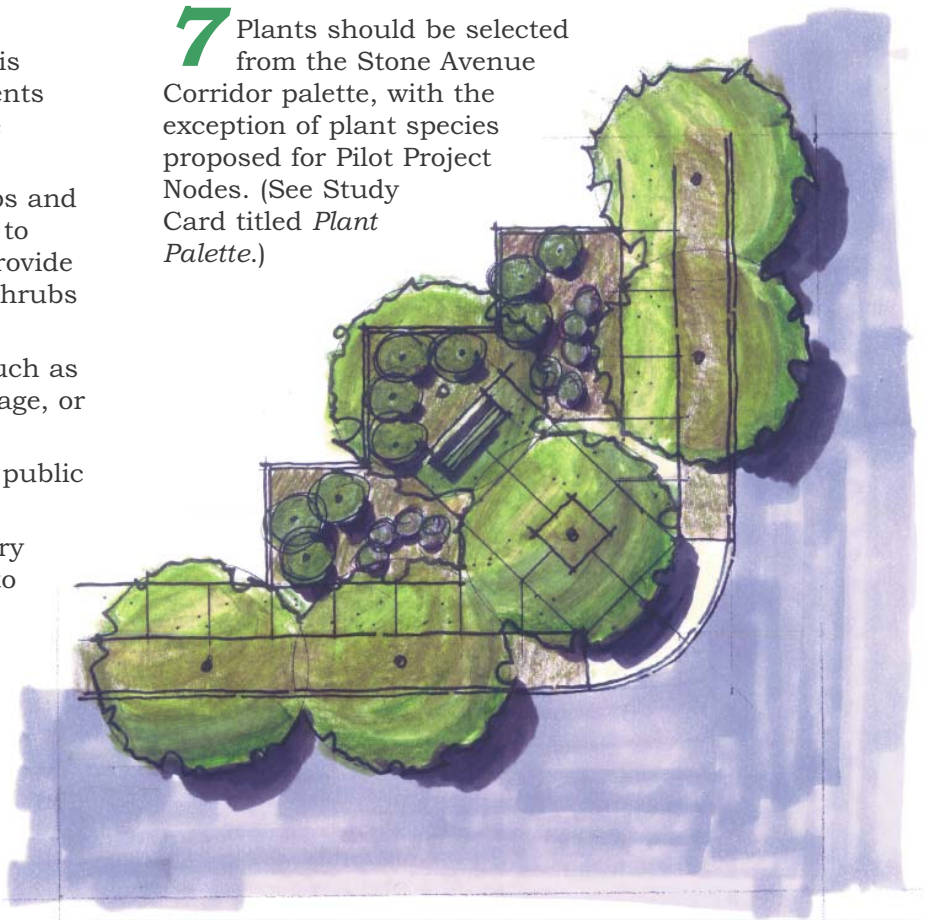
3 Green nodes may contain amenities such as pedestrian seating or information signage, or they may simply function as green spaces.

4 Green nodes may be located on either public or private property.

5 The space green nodes occupy may vary greatly in size, ranging from planters to corner right-of-way. Such right-of-way may become available in conjunction with an intersection project, a street closing, a wide setback area, or a vacant lot.

6 Any green node that contains pedestrian amenities should be accessible to people with disabilities in compliance with the Americans with Disabilities Act.

7 Plants should be selected from the Stone Avenue Corridor palette, with the exception of plant species proposed for Pilot Project Nodes. (See Study Card titled *Plant Palette*.)



Green Node Corner Concept: TMHS

How Can Green Nodes Be Installed and Maintained?

Because green nodes come in a variety of sizes and can be constructed on public or private property, they should be among the proposed streetscape elements that start to be implemented in the near future.

Green nodes can be:

- Planned in conjunction with new development or redevelopment of property adjacent to Stone Avenue.
- Incorporated into public construction work, such as proposed full or partial side street closings.

**Have questions about the study results?
Contact the City of Tucson
Comprehensive Planning Task Force
at 791-4505.**

- Championed by a neighborhood association for an important neighborhood entry location. Financial assistance might be sought from the City of Tucson, or for more modest node designs, funds might be raised through neighborhood association activities or business donations. Recognition of such efforts might be given through green node plaques and/or mentioned in the local media.

Green nodes should be maintained through a combination of low maintenance design, innovative techniques such as water harvesting, and cooperative efforts between the City of Tucson, adjacent businesses, and nearby neighborhood associations.